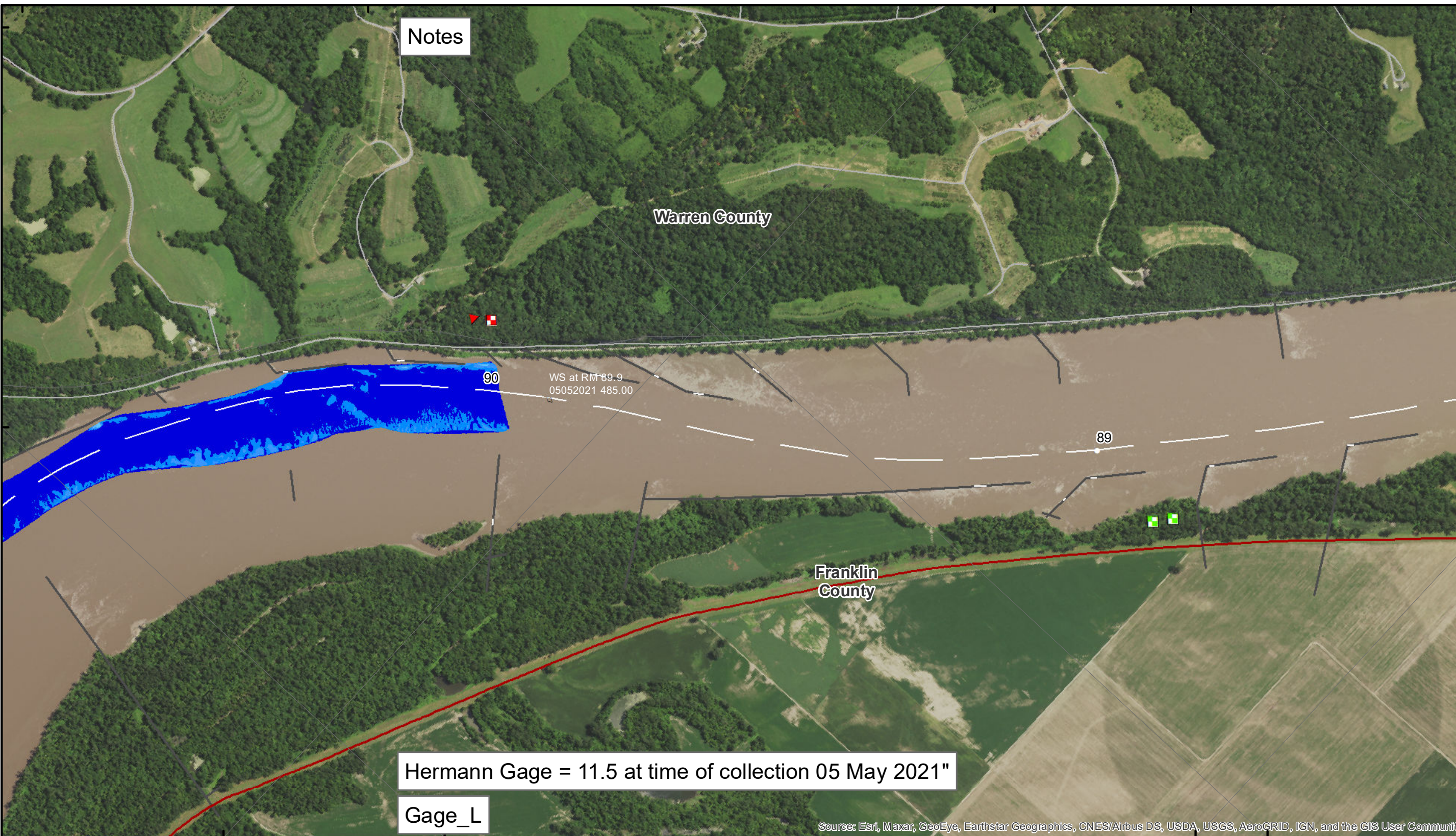


38°43'N 91°18'W 38°41'N 91°17'W



Notes

Warren County

Franklin County

Hermann Gage = 11.5 at time of collection 05 May 2021"

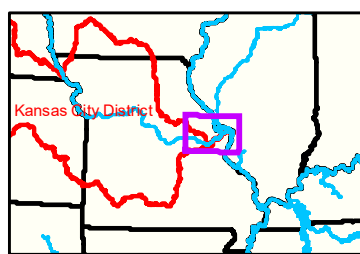
Gage_L

WS at RM+89.9
05052021 485.00

89

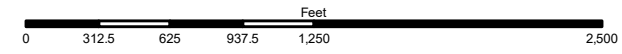
90

Source: Esri, Maxar, GeoEye, Earthstar Geographics, CNES/Airbus DS, USDA, USGS, AeroGRID, IGN, and the GIS User Community



LEGEND

	< 8		< 8 ft		Green Passing		Green		Green CAN
	8 - 9		8 - 9 ft		Red Passing		Red		Red NUN
	9 - 9.5		9 - 10 ft		Green Crossing		Junction		
	9.5 - 10		10 - 12 ft		Red Crossing				
	10 - 12		River Mile						
	12 - 14		Sailing Line						
	14 - 16		BSNP Structure						
	> 16		Levee						



NOTES:
Horizontal Coordinate System:
World Geodetic System of 1984 (WGS84), projected to the Universal Transverse Mercator (UTM) Zone 15 North.
Distance units in U.S. Survey Feet

Vertical Datum:
Soundings are shown in feet and indicated depths are referenced to water surface at time of collection.

The information depicted on this map represents the results of a survey conducted on the date indicated and can only be considered to represent the general condition existing at that time.

The location of navigation aids are based on and provided by the U.S. Coast Guard.



US Army Corps of Engineers
District: CENWK

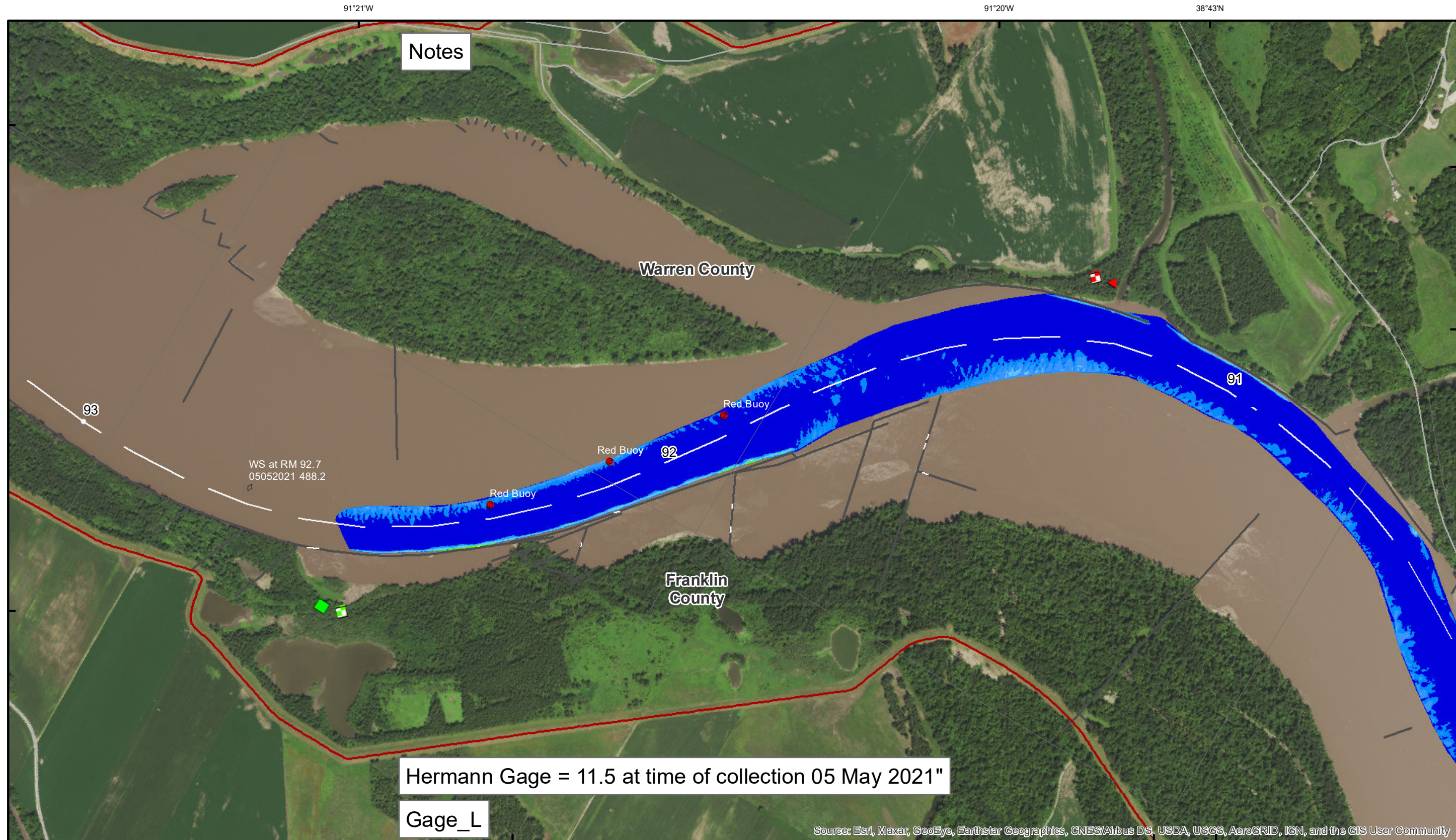
Disclaimer: The U.S. Army Corps of Engineers (USACE) provides this information as a service to the public. It is not intended to be used for any purpose other than that for which it was intended. The USACE does not warrant the accuracy, reliability, or completeness of the information provided. The USACE is not responsible for any errors or omissions in this information. The USACE is not liable for any damages, including consequential damages, arising from the use of this information. The USACE is not responsible for any actions taken based on this information. The USACE is not responsible for any actions taken based on this information. The USACE is not responsible for any actions taken based on this information.

KANSAS CITY DISTRICT MISSOURI RIVER AREA OFFICE	
Submitted By:	MRAO
Reviewed By:	MRAO
Approved By:	MRAO

Survey Information

MO_01_LMR
MO_01_LMR_20210505_CS_90_0_92_5_SORT
05 May 2021

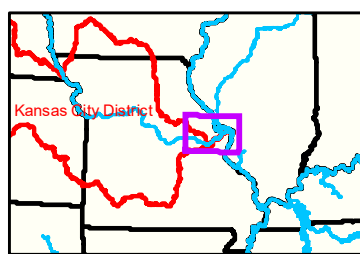
Sheet Number
41 of 46



DISCLAIMER: The U.S. Army Corps of Engineers (USACE) provides this information as a service to the public. It is not intended to be used for any purpose other than that for which it was prepared. The USACE makes no warranty, express or implied, regarding the accuracy, reliability, or completeness of the information. The user assumes all liability for any use of the information. The USACE is not responsible for any errors or omissions in this information. The USACE is not liable for any damages, including consequential damages, arising from the use of this information. The USACE is not responsible for any loss of data or information. The USACE is not responsible for any loss of time or money. The USACE is not responsible for any loss of life or property. The USACE is not responsible for any loss of reputation. The USACE is not responsible for any loss of honor. The USACE is not responsible for any loss of dignity. The USACE is not responsible for any loss of respect. The USACE is not responsible for any loss of esteem. The USACE is not responsible for any loss of honor. The USACE is not responsible for any loss of dignity. The USACE is not responsible for any loss of respect. The USACE is not responsible for any loss of esteem.

KANSAS CITY DISTRICT MISSOURI RIVER AREA OFFICE	
Submitted By:	MRAO
Reviewed By:	MRAO
Approved By:	MRAO

Survey Information
 MO_01_LMR
 MO_01_LMR_20210505_CS_90_0_92_5_SORT
 05 May 2021



LEGEND

	< 8		< 8 ft		Green Passing		Green
	8 - 9		8 - 9 ft		Red Passing		Red
	9 - 9.5		9 - 10 ft		Green Crossing		Green CAN
	9.5 - 10		10 - 12 ft		Red Crossing		Red NUN
	10 - 12		River Mile		Junction		
	12 - 14		Sailing Line				
	14 - 16		BSNP Structure				
	> 16		Levee				

Scale: 0 312.5 625 937.5 1,250 2,500 Feet

NOTES:
 Horizontal Coordinate System: World Geodetic System of 1984 (WGS84), projected to the Universal Transverse Mercator (UTM) Zone 15 North. Distance units in U.S. Survey Feet.
 Vertical Datum: Soundings are shown in feet and indicated depths are referenced to water surface at time of collection.
 The information depicted on this map represents the results of a survey conducted on the date indicated and can only be considered to represent the general condition existing at that time.
 The location of navigation aids are based on and provided by the U.S. Coast Guard.

Sheet Number
 42 of 46